

SPRING RETURN HANDLES SRH

DESCRIPTION

Spring return handles, also called “dead man’s handles” consist of an enclosed spring-loaded lever mechanism which ensures fail-safe operation when mounted in a quarter-turn valve.

This device ensures that the valve cannot be left open (or closed) as a powerful spring will place the valve in the fail-safe position as soon as the operator releases the handle.

MAIN FEATURES

Clockwise spring action.

Lockable as standard.

Weatherproof sealed spring housing.

ISO 5211 mounting.

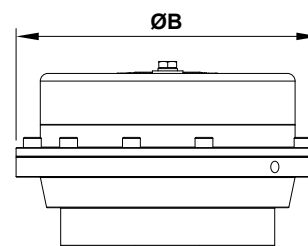
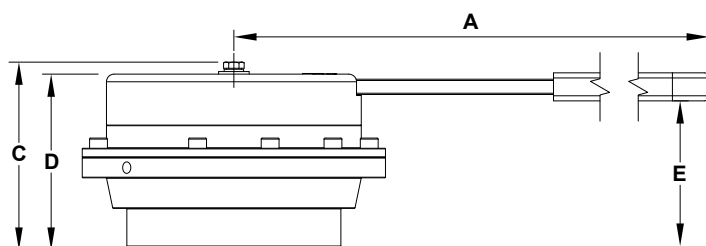
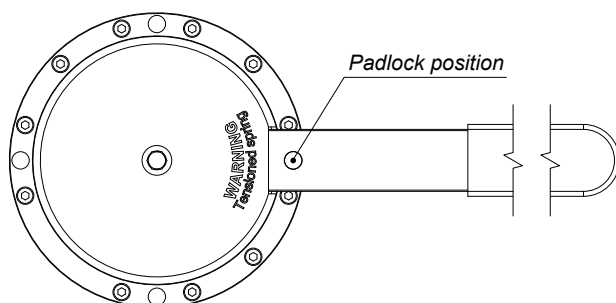
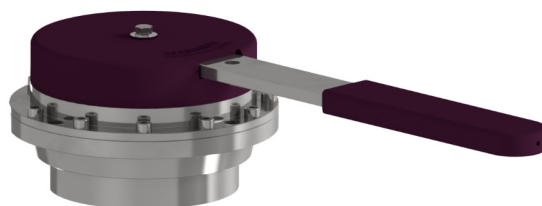
Sealed to IP 65.

OPTIONS: Counterclockwise spring action.
Padlock.

USE: Fail-safe operation for quarter turn manual valves.

AVAILABLE

MODELS: SRH1 – AISI 304 / 1. 4301 stainless steel.



DIMENSIONS (mm)						
MODEL	A	ØB	C	D	E	WEIGHT (kg)
SRH1/24	248	119	74	69	57	2,5
SRH1/40	248	119	74	69	57	2,5

SPRING RETURN HANDLE TORQUES		
MODEL	MOUNTING TYPES	TORQUE (Nm)
SRH1/24	F03 / F05 / F07	24
SRH1/40	F03 / F05 / F07	40