

DIRECT SOLENOID VALVE SV32

DESCRIPTION

3/2 way solenoid valves are available as single station units and they are designed for use with compressed air, mainly applied where on-off control is required with pneumatic actuators.

OPTIONS: Other versions under request.

USE: Pneumatic actuator control, among others.

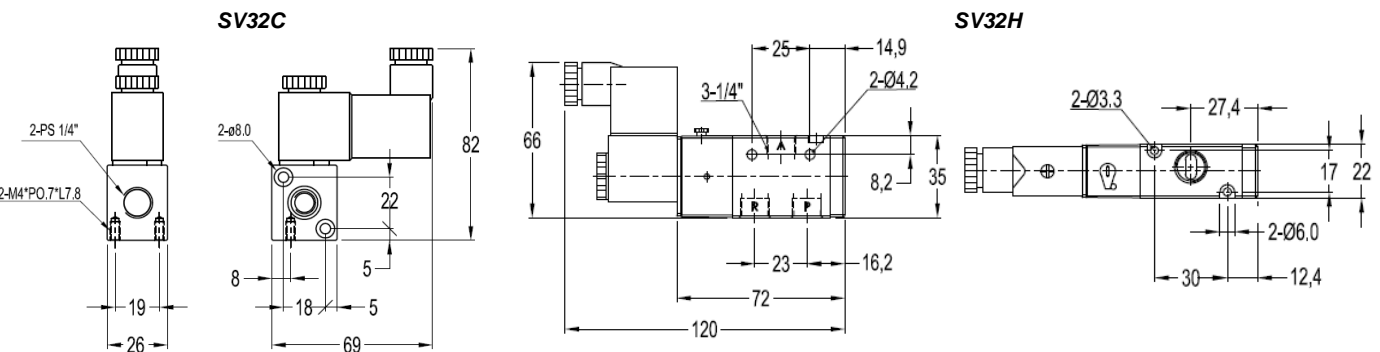
AVAILABLE MODELS: SV32C and SV32H.

PIPE CONN.: 1/4".

CONNECTIONS: Male thread ISO7/1 Rp (BS21).

INSTALLATION: In any position.

DIMENSIONS (mm):



TECHNICAL DATA		
TYPE	SV32C	SV32H
Body material	Aluminium alloy	
Sectional area	1,5 mm ²	16 mm ²
Applicable fluid	Compressed air (filtered through 40 micron filter element)	
Action	Direct acting with spring return	Internal pilot
Operating pressure	0 to 8 bar	
Maximum proof pressure	10 bar	
Ambient temperature	-10 °C to 60 °C	
Duty cycle	100% ED	
Coil type	DIN	
Protection class	IP65 (DIN 40 050)	
Insulation class	F	
Voltage tolerance	±10%	
Standard voltages	220VAC, 110VAC, 24VDC	
Net weight	0,16 Kg	0.18 Kg