

## FLOAT AND THERMOSTATIC STEAM TRAPS FLT50S and FLT65S (Fabricated steel)

### DESCRIPTION

The FLT50S / 65S float and thermostatic steam traps series (with integral air vent) are designed for all types of low and high pressure steam heating and process equipment.

Typical applications include unit heaters, heat exchangers, driers, jacketed vessels and all the applications where continuous drainage is essential.

Connections are flanged.

### MAIN FEATURES

Modulating discharge.

Discharges condensate at steam temperature.

Unaffected by sudden or wide load and pressure changes.

Excellent air discharge (by thermostatic air vent).



OPTIONS: Equalizing plug or vent connection.

USE: Saturated and superheated steam.

AVAILABLE MODELS:

FLT50S; FLT65S.

SIZES: FLT50S – DN 50 to DN 65.  
FLT65S – DN 65 to DN 100.

CONNECTIONS: Flanged EN 1092-1 PN16 or ANSI 150 lb.

INSTALLATION: Horizontal standard installation with vertical inlet and horizontal outlet.

CE MARKING – GROUP 2 (PED – European Directive)	
PN16	Category
FLT50S – DN 50 to DN 65	2 (CE marked)
FLT65S – DN 65 to DN 100	2 (CE marked)

BODY LIMITING CONDITIONS	
FLANGED PN16 / ANSI 150 lb **	RELATED TEMPERATURE
ALLOW. PRESS.	
14,8 bar	100 °C
13,3 bar	200 °C
12,1 bar	250 °C
11 bar	300 °C

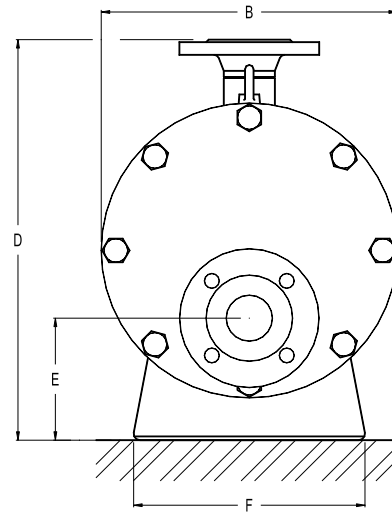
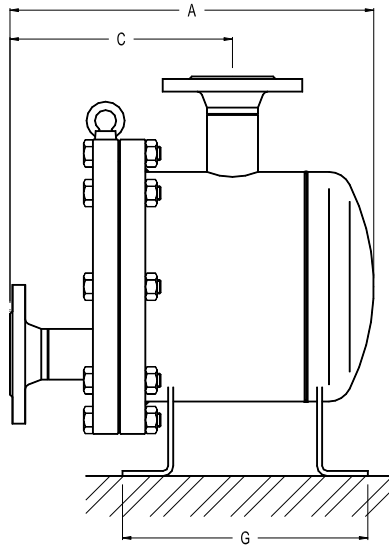
PMO – Max. operating pressure 12 bar

TMO – Max. operating temperature 250 °C

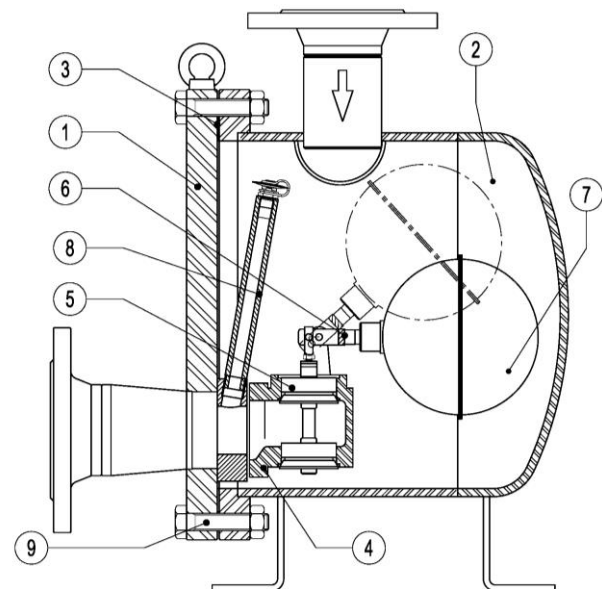
\*According to EN 1092-1:2018.

FLOW RATE CAPACITY (kg/h)																	
MODEL	SIZE DN	DIFFERENTIAL PRESSURE (bar)															
		0,1	0,3	0,5	1	1,5	2	2,5	3	3,5	4	5	6	7	8	10	12
FLT50S-12	50 – 65	7500	10000	11300	12500	13500	15000	16000	17500	18500	20000	20500	21500	22000	22500	23000	23500
FLT65S-12	65 – 100	18800	22700	24500	29000	31000	34000	37000	38000	39500	42000	43500	45500	47000	48000	49500	50000

DIMENSIONS (mm)										
MODEL	SIZE	A	B	C	D	E	F	G	VOL. (L)	WGT. (kg)
FLT50	2" – DN 50	430	350	250	480	145	275	290	14,4	59
FLT50	2 1/2" – DN 65	460	350	280	480	145	275	290	14,8	60
FLT65	2 1/2" – DN 65	475	440	255	570	160	360	360	26,5	96,6
FLT65	3" – DN 80	506	440	286	570	160	360	360	27	98,5
FLT65	4" – DN 100	520	440	300	570	160	360	360	28	100,5



MATERIALS		
POS. N°	DESIGNATION	MATERIAL
1	Body	P250GH / 1.0460; P235GH / 1.0345; S355J2G3 / 1.0570; S235JRG2 / 1.0038
2	Cover	P235GH / 1.0345; P265GH / 1.0425; S355J2G3 / 1.0570
3	*Gasket	Graphite
4	*Seat	CF8 / 1.4308
5	*Valve	AISI 420 / 1.4021; CF8M / 1.4408
6	*Lever	AISI 316 / 1.4401; AISI 304 / 1.4301
7	*Float	AISI 304 / 1.4301
8	*Air vent	St. steel (Thermostatic)
9	Bolts	Steel 8.8



\* Available spare parts.