

## FLOAT AND THERMOSTATIC STEAM TRAPS

### Twin Float Traps DN 80 – DN100

#### FLT22S/TW – Carbon steel / FLT22SS/TW – Stainless steel

#### DESCRIPTION

The FLT22/TW float and thermostatic (integral air vent) steam traps series are designed for all types of low and high pressure steam heating and process equipment.

Typical applications include unit heaters, heat exchangers, driers, jacketed vessels and all the applications where continuous drainage is essential.

#### MAIN FEATURES

Modulating discharge.

Discharges condensate at steam temperature.

Unaffected by sudden or wide load and pressure changes.

Excellent air discharge (by thermostatic air vent).

USE: Saturated and superheated steam.

#### AVAILABLE MODELS:

FLT22S/TW – Carbon steel.

FLT22SS/TW – Stainless steel.

SIZES: DN 80 to DN 100.

CONNECTIONS: Flanged EN1092-1 PN16 or PN25.  
Flanged ANSI Class 150 lb or 300 lb.

INSTALLATION: Standard horizontal installation.  
Vertical on request.

#### MAX. DIFFERENTIAL PRESSURE:

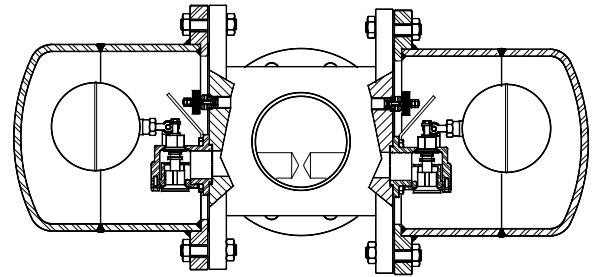
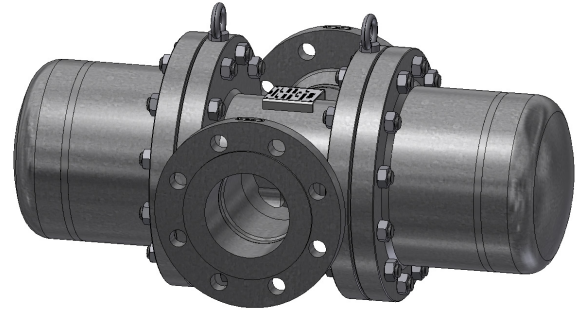
FLT22S/TW-4,5 : 4,5 bar

FLT22S/TW-10 : 10 bar

FLT22S/TW-14: 14 bar

FLT22S/TW-21: 21 bar

Note: the same figures are valid for the FLT22SS/TW.



#### CE MARKING – GROUP 2 (PED – European Directive)

PN16	PN25	Category
DN 80 – DN 100	–	1 (CE marked)
–	DN 80 – DN 100	2 (CE marked)

#### BODY LIMITING CONDITIONS

FLT22S/TW			FLT22SS/TW			RELATED TEMP.
FLANGED PN16 *	FLANGED ANSI 150 lb **	FLANGED PN25 / ANSI 300 lb *	FLANGED PN16 *	FLANGED ANSI 150 lb **	FLANGED PN25 / ANSI 300 lb *	
ALLOW. PRESS.	ALLOW. PRESS.	ALLOW. PRESS.	ALLOW. PRESS.	ALLOW. PRESS.	ALLOW. PRESS.	
16 bar	15,4 bar	23,2 bar	15 bar	15,3 bar	23,6 bar	100 °C
13,3 bar	13,8 bar	20,8 bar	12,7 bar	12,6 bar	19,8 bar	200 °C
12,1 bar	12,1 bar	19 bar	12 bar	11,7 bar	18,6 bar	250 °C
11 bar	10,2 bar	17,2 bar	11 bar	9,7 bar	17,2 bar	300 °C

PMO – Max. operating pressure 21 bar;

TMO – Max. operating temperature 250 °C.

\* According to EN1092-1:2018 ; \*\* According to EN1759-1:2004.

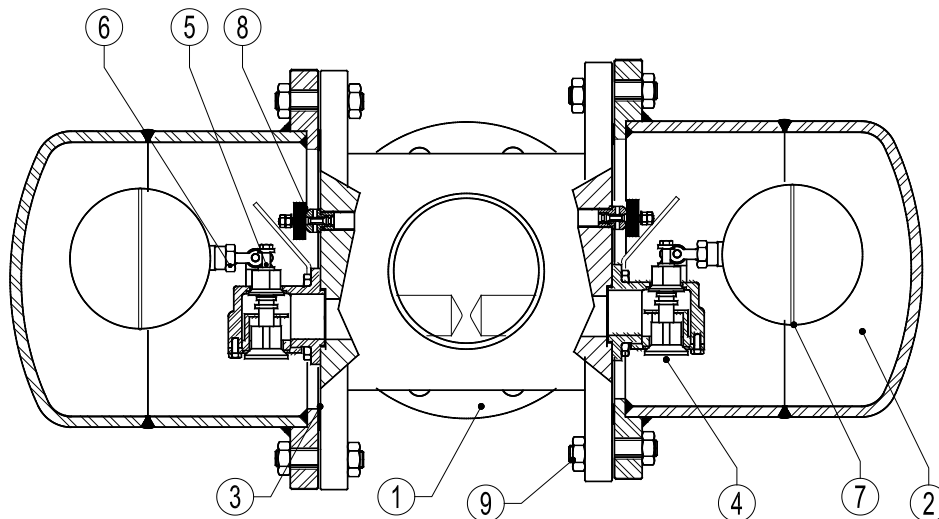
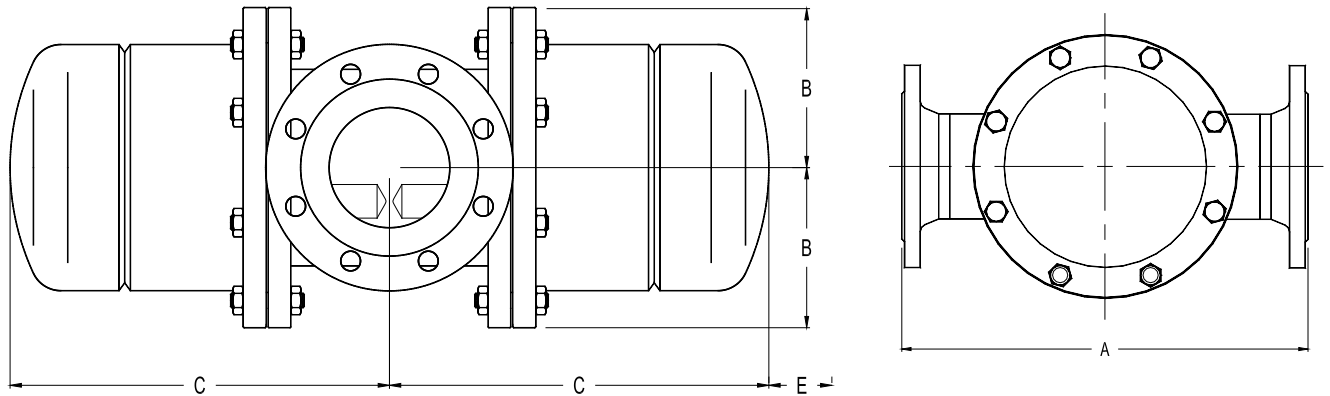
Body limiting conditions PN25 or below, depending on the type of connection adopted.

#### FLOW RATE CAPACITY (kg/h)

MODEL	SIZE DN	DIFFERENTIAL PRESSURE (bar)										
		0,5	0,7	1	1,5	2	4,5	7	10	14	16	21
FLT22S/TW-4,5	80 – 100	15100	18100	22000	28000	31000	45000	–	–	–	–	–
FLT22S/TW-10	80 – 100	7800	8900	10000	12200	14200	20000	27500	32000	–	–	–
FLT22S/TW-14	80 – 100	3800	4600	5400	6200	7200	10000	13800	16200	19600	–	–
FLT22S/TW-21	80 – 100	3800	4600	5400	6200	7200	10000	13800	16200	19600	20000	24100

**DIMENSIONS (mm)**

SIZE	PN25					ANSI 150 lb					ANSI 300 lb				
	A	B	C	E	WGT. (kg)	A	B	C	E	WGT. (kg)	A	B	C	E	WGT. (kg)
3" – DN 80	440	155	345	235	110	463	155	235	235	110	482	155	345	235	110
4" – DN 100	440	155	345	235	115	463	155	235	235	115	482	155	345	235	115



**MATERIALS**

POS. N°	DESIGNATION	FLT22S/TW	FLT22SS/TW
1	Body	P250GH / 1.0460 ; P235GH / 1.0345 ; S355J2G3 / 1.0570 ; S235JRG2 / 1.0038	AISI316 / 1.4401 ; AISI304 / 1.4301
2	Cover	P235GH / 1.0345 ; P265GH / 1.0425 ; S355J2G3 / 1.0570	AISI316 / 1.4401 ; AISI304 / 1.4301
3	* Gasket	Graphite	Graphite
4	* Seat	A351 CF8 / 1.4308	A351 CF8 / 1.4308
5	* Valve	AISI420 / 1.4021	AISI420 / 1.4021
6	* Lever	AISI304 / 1.4301	AISI304 / 1.4301
7	* Float	AISI304 / 1.4301	AISI304 / 1.4301
8	* Air vent	St. steel (bimetallic)	St. steel (bimetallic)
9	Bolts	Steel 8.8	Steel 8.8

\* Available spare parts.