

## LIFTING POTS LIPO

### DESCRIPTION

The ADCA LIPO series of condensate lifting pots were designed for installation in steam and condensate systems. They are particularly used in condensate lines where condensate must be transported without causing water hammers and noise and lifted to elevated condensate mains.

When condensate is lifted to an elevated condensate mains, the flash steam formed at the outlet of the steam trap will condense due to sudden contact with condensate at a much lower temperature. The steam bubbles implode, reducing their volume while passing to the liquid state. Vacuum is then suddenly formed pulling violently the surrounding condensate which causes pressure shocks and water hammer.

The LIPO prevents this phenomenon from happening, by maintaining an air and flash steam cushion in the upper part of the lifting pot to absorb these shocks, while at the bottom the condensate operates as a sealing liquid. The condensate flowing inside the LIPO is thus pushed by the pressure inside to the elevated condensate mains.

**OPTIONS:** Inspection hole for size 4" and DN 100.

**USE:** Lifting condensate to condensate mains.

### AVAILABLE

**MODELS:** LIPOS – carbon steel.  
LIPOSS – stainless steel.

**SIZES:** 1/2" to 4"; DN 15 to DN 100.

**CONNECTIONS:** Flanged EN 1092-1 PN 16 or PN 40.  
Flanged ASME B16.5 Class 150.

**INSTALLATION:** Horizontal installation. Horizontal inlet and vertical outlet.  
See IMI – Installation and maintenance instructions.



MATERIALS		
DESIGNATION	LIPOS	LIPOSS
Body	P235GH / 1.0325	AISI 316 / 1.4401
Head	P265GH / 1.0425	AISI 316 / 1.4401
Inlet / outlet pipe	P235GH / 1.0325	AISI 316 / 1.4401
EN flange	P250GH / 1.0460	AISI 316 / 1.4401
ASME flange	ASTM A105 / 1.0432	AISI 316 / 1.4401
Internals	P235GH / 1.0460; AISI 316 / 1.4401	AISI 316 / 1.4401

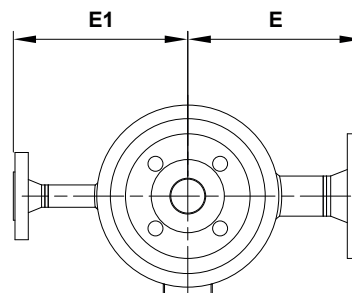
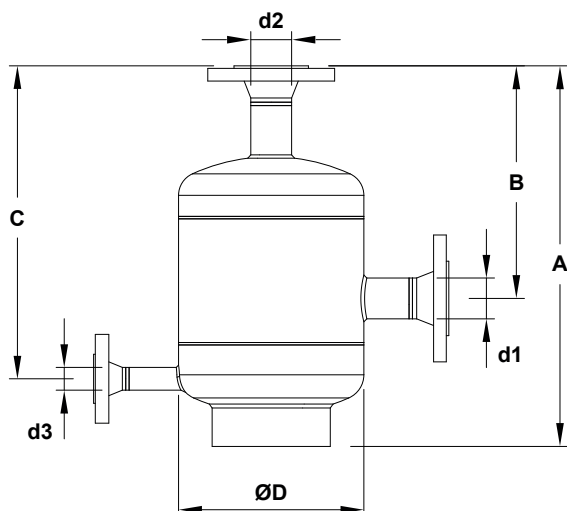
CE MARKING – GROUP 2 (PED – EUROPEAN DIRECTIVE)		
PS 12 bar	PS 18 bar	CATEGORY
1/2" to 2" DN 15 to 50	DN 15 to 50	1 (CE marked)
2 1/2" to 4" DN 65 to 100	DN 65 to 100	2 (CE marked)

LIMITING CONDITIONS		
	PN 16 / CLASS 150	PN 40
PS – Max. allowable pressure	12 bar	18 bar
TS – Max. allowable temp.	250 °C	250 °C

Minimum operating temperature: -10 °C.

Design code: AD-Merkblatt.

Remark: Other conditions on request.



**DIMENSIONS (mm)**

SIZE	A	B	C	ØD	d1	d2	d3	E	E1	WEIGHT (kg)
1/2" – DN 15	384	240	325	170	DN 15	DN 15	DN 15	180	180	9
3/4" – DN 20	384	240	325	170	DN 20	DN 20	DN 15	180	180	10
1" – DN 25	384	240	325	170	DN 25	DN 25	DN 15	180	180	11
1 1/4" – DN 32	450	275	375	220	DN 32	DN 32	DN 20	210	210	18,5
1 1/2" – DN 40	450	275	375	220	DN 40	DN 40	DN 20	210	210	19
2" – DN 50	450	275	375	220	DN 50	DN 50	DN 20	210	210	21
2 1/2" – DN 65	630	425	540	275	DN 65	DN 65	DN 20	240	240	35
3" – DN 80	630	400	540	275	DN 80	DN 80	DN 20	240	240	38
4" – DN 100	660	400	545	400	DN 100	DN 100	DN 20	350	350	74

### TYPICAL INSTALLATION

