

## GAUGE SIPHONS GSV

### DESCRIPTION

The ADCA GSV series pressure gauge siphons were designed to protect pressure gauges from the effects of sudden pressure surges and hot pressurized fluids.

Specifically designed to replace the traditional "pigtail" and other coil designs siphons where it is necessary to eliminate gauge whip and vibration. They operate as cooling elements for liquids and gases in pressure measuring devices.

An isolation pressure gauge cock is recommended to be installed in combination with gauge siphons.

### MAIN FEATURES

Complete stainless steel construction.

Compact sturdy design, requires minimum space for installation.

OPTIONS: Different types of connections.

USE: Pressure gauge protection on steam, water, compressed air and other fluid systems compatible with the construction.

AVAILABLE MODELS: GSV – stainless steel.

SIZES: 1/2" (male x female).

CONNECTIONS: ISO 228-1.

MATERIAL: AISI 316L / 1.4404.

INSTALLATION: Vertical.

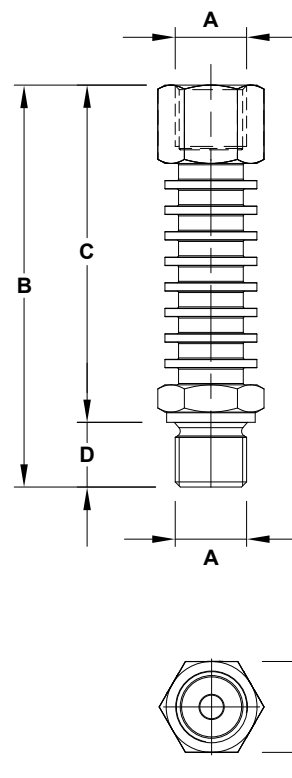
BODY LIMITING CONDITIONS: 63 bar at 400 °C; 100 bar at 120 °C.



**GSV**

#### CE MARKING – GROUP 2 (PED – EUROPEAN DIRECTIVE)

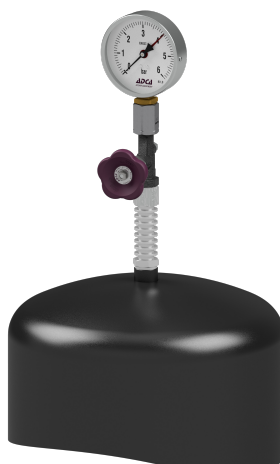
PN 100	CATEGORY
1/2"	SEP



### TYPICAL INSTALLATION



*Horizontal pipe*



*Top of vessel*

#### DIMENSIONS

SIZE	A	B	C	D	E	WGT. (kg)
1/2"	1/2"	118	99	19	27	0,5