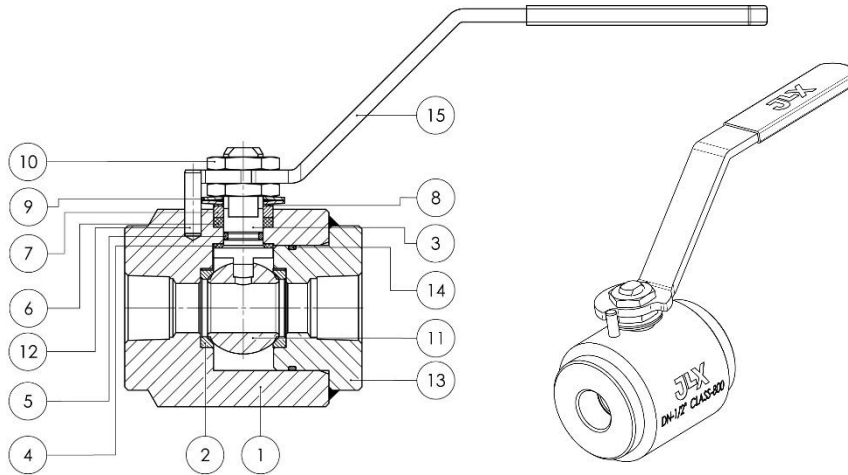


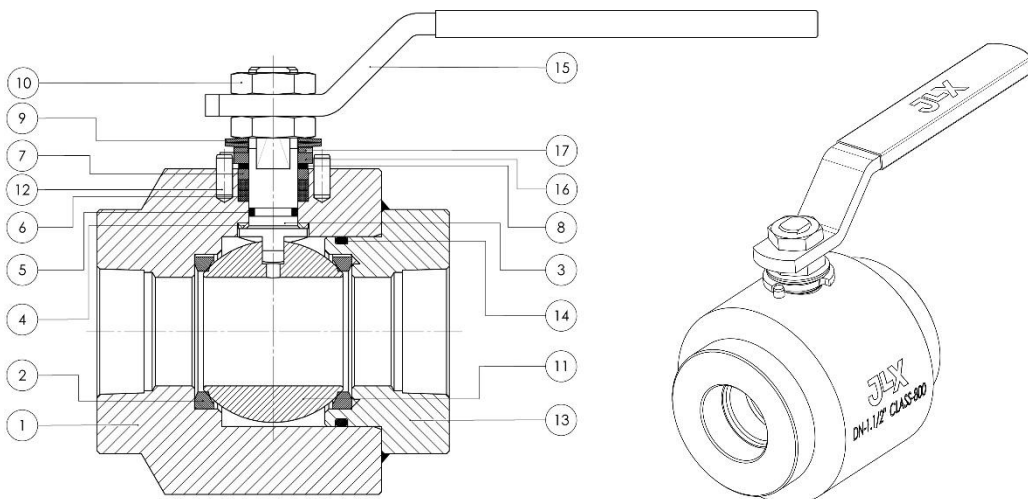


3/8" to 1"

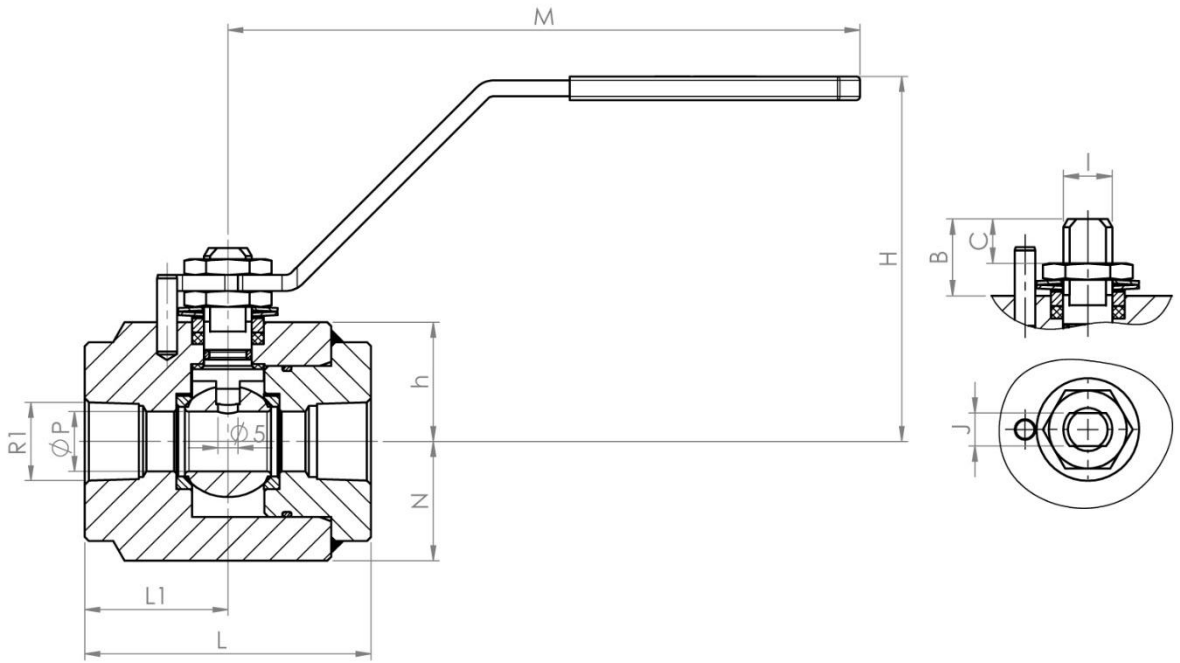


Item	Description	Material	
		Carbon Steel (800FB2A)	Stainless Steel (800FB2I)
1	Body	ASTMA-105N	A 479 Tp.316L
2	Seat ring	PTFE + 20% Carbon + 5% Graphite	
3	Stem	A 276/479 Tp.316	
4	Stem thrust seal	25% G.F. PTFE	
5	O' Ring	FKM	
6	Gland packing	Graphite	
7	Gland	AISI 304	AISI 316
8	Thrust washer	25% G.F. PTFE	
9	Disk spring	Carbon Steel	AISI 301
10	Nut	Zinc Plated Carbon Steel	AISI 303
11	Ball	A 479 Tp.316	
12	Stop pin	Carbon Steel	Stainless Steel
13	Body Connector	ASTMA-105N	A 479 Tp.316L
14	O' Ring	FKM	
15	Wrench	Carbon Steel + Nickel Plated	
16	Stop plate (1 1/2" & 2")	Carbon Steel	AISI 304
17	Spacer (1 1/2" & 2")	Carbon Steel	AISI 304
--	Identificacion plate	Stainless St.	

1 1/2" & 2"



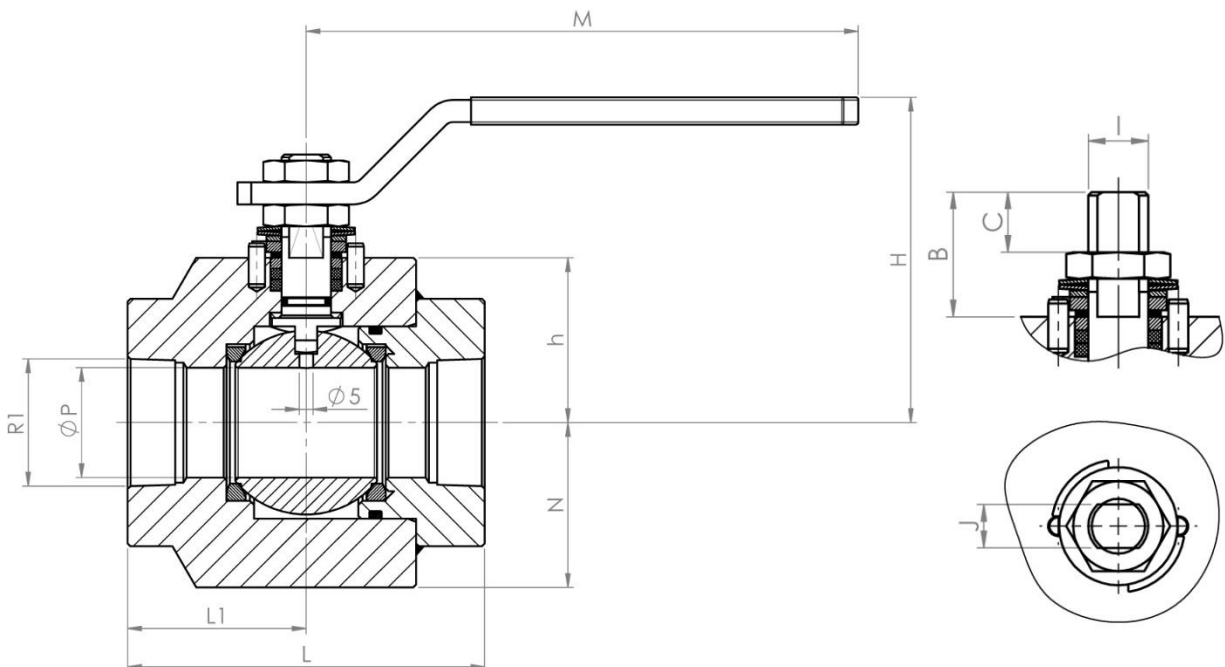
3/8" to 1"



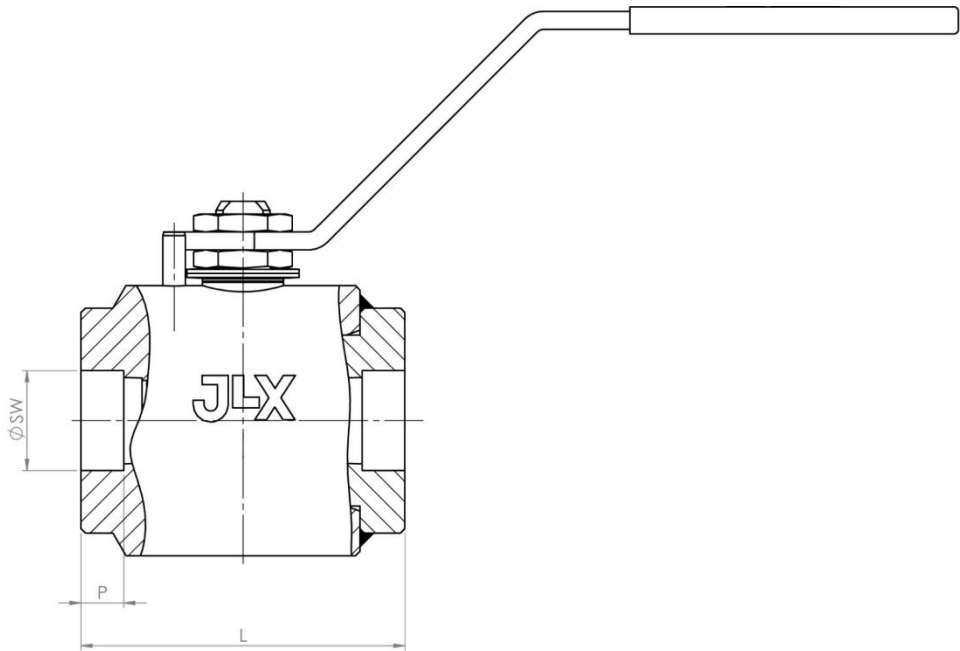
DN	L	L1	ØP	h	N	H	M	B	C	I	J	R1
3/8"	70	35	9,5	25	25	86,5	159	16	8,5	10	6	3/8" NPT
1/2"	72	36	15	30	30	92	159	18,7	10,8	12	8	1/2" NPT
3/4"	90	45	20	32,5	32,5	94,5	159	19,2	11,3	12	8	3/4" NPT
1"	95	47,5	25	36	36	98,5	159	19,7	11,3	12	8	1" NPT
1 1/2"	130	65	40	60	60	119	201	37,5	18,1	18	13	1 1/2" NPT
2"	140	70	50	72,5	72,5	134	326	41	18,9	22	16	2" NPT

(*) Dimensions in mm.

1 1/2" & 2"



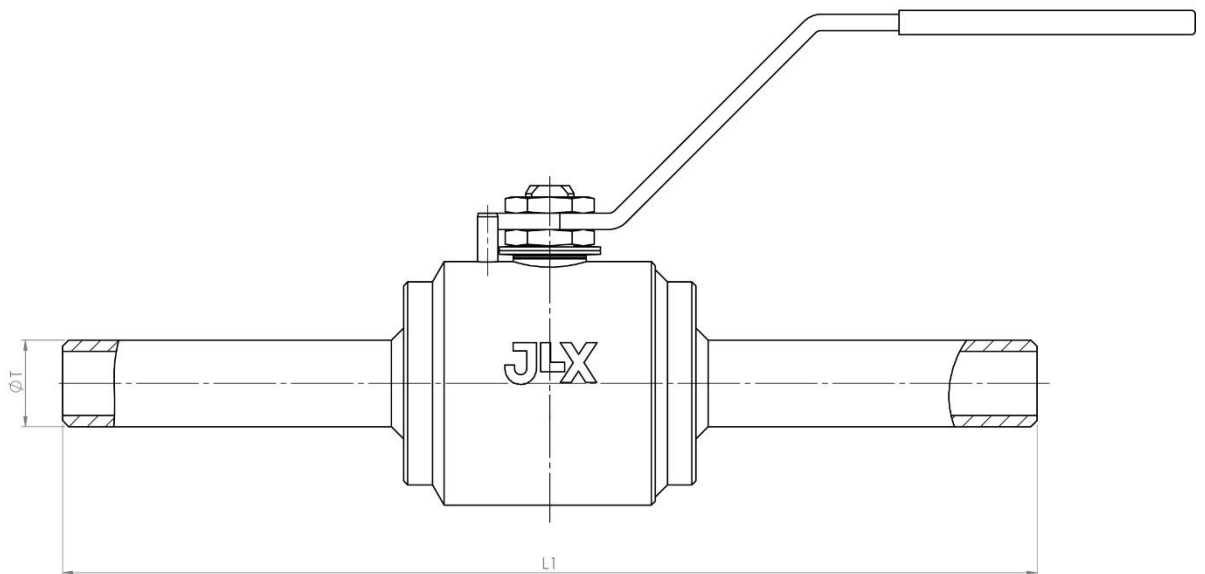
SW: 800FB2ASW & 800FB2ISW



DN	L	ØSW	P	L1	ØT
3/8"	70	18	9,5	240	17,1
1/2"	72	22,2	9,5	240	21,3
3/4"	90	27,6	12,5	240	26,7
1"	95	34,3	12,5	240	33,4
1 1/2"	130	49,2	12,5	260	48,3
2"	140	61,7	16	260	60,3

(*) Dimensions in mm.

Nipples: 800FB2ABW & 800FB2IBW



DESIGN STANDARDS				
Valve design	ANSI B16.34			
Shell thickness	ANSI B16.34			
End to end dimensions	Manufacturer's standard			
Marking	DIN EN 19	CE Mark > DN1"	A TEX	EN ISO 17292
TESTS AND CERTIFICATES				
Quality Assurance	ISO 9001			
Fire safe Certification	ISO 10497	BS 6755 Part 2	API 6FA	
Pressure testing	API 598	BS 6755 Part 1	EN ISO 17292	EN 12266
Other	ISO 14001			

Torque Values in Nm

BALL BORE	ΔP
	138 bar
3/8"	17
1/2"	19
3/4"	26
1"	29
1 1/2"	52
2"	68

Pressure-Temperature Chart

