

PISTON SENSING PRESSURE REDUCING VALVES P20P

DESCRIPTION

The ADCA P20P is a series of direct acting, spring loaded, piston sensing pressure reducing valves.

These regulators are designed for use with nitrogen, compressed air, water and other gases and liquids compatible with the materials of construction.

They are suitable for general purpose pressure reducing applications such as instrumentation systems and industrial equipment where small loads and high pressures are involved.

MAIN FEATURES

- Compact design.
- Machined from bar stock materials.
- Non-rising adjustment knob.
- Ultrasonically cleaned and degreased.

- OPTIONS:**
- Gauge connection on body.
 - Different soft valves for liquids and gases.
 - Top cap (adjustment screw with cover).
 - Degreased for oxygen application.
 - Leakage line connection.
 - Panel mounting.
 - Bottom mounting.
 - Self relieving.

USE: Compressed air, water and other gases and liquids compatible with the construction.

AVAILABLE MODELS: P20P – stainless steel, piston sensing, low flow.

SIZES: 1/4".

CONNECTIONS: Female threaded ISO 7 Rp, ISO 228 or NPT.

INSTALLATION: In any position.
See IMI – Installation and maintenance instructions.

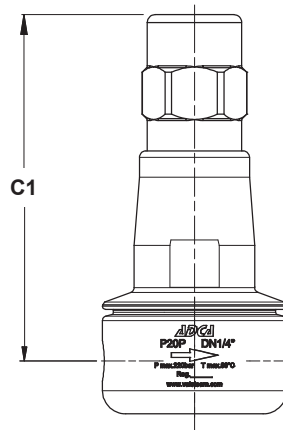
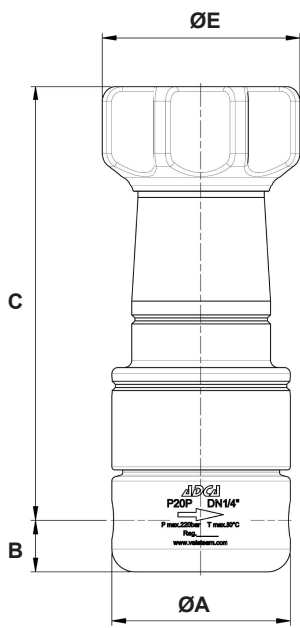


CE MARKING – GROUP 2 (PED – European Directive)	
PN 320	Category
1/4"	SEP

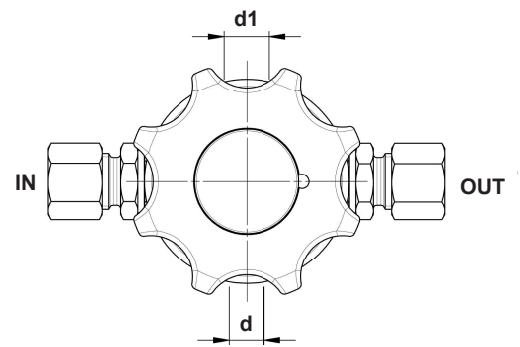
FLOW RATE COEFFICIENTS (m ³ /h)			
SIZE	1/4"		
Kvs	0,043	0,22	0,62

LIMITING CONDITIONS	
Valve model	P20P
Body design conditions	PN 320
Maximum upstream pressure	220 bar
Maximum downstream pressure	200 bar
Minimum downstream pressure	0,2 bar
Maximum design temperature	80 °C
Maximum recommended reducing ratio	40:1

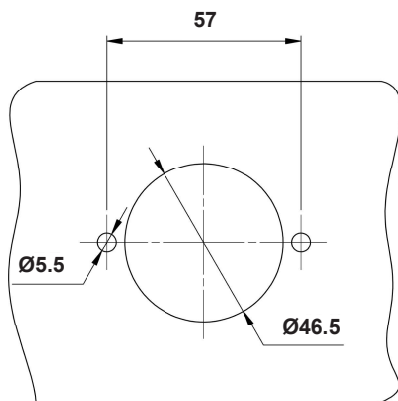
OPTIONS			
PRESSURE GAUGE CONN.	TOP CAP	LEAKAGE LINE CONNECTION	PANEL MOUNTING



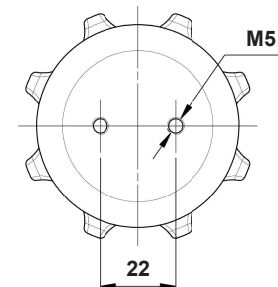
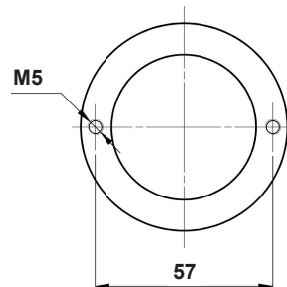
Optional top cap



Optional leakage line (d) and pressure gauge (d1) connections



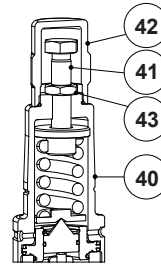
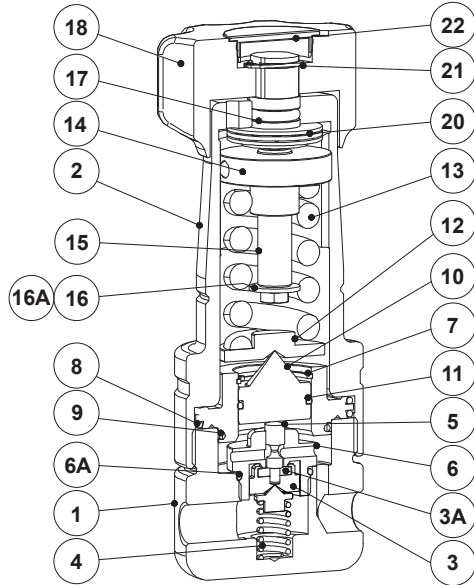
Panel mounting



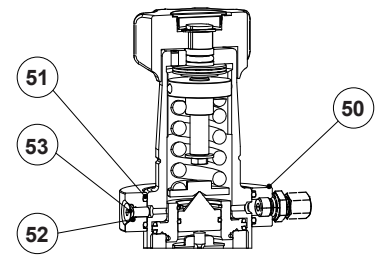
Optional bottom mounting connection

DIMENSIONS (mm)								
SIZE	ØA	B	C	C1	d	d1	ØE	WEIGHT (kg)
1/4"	59	17	143,5	171	1/8"	1/4"	69	2,5

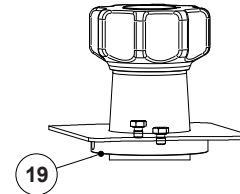
Remarks: As standard, in versions manufactured with ISO threads, connections d1 and d2 are female threaded ISO 228. In versions with NPT threads, these connections are female threaded NPT.



Optional top cap



Optional leakage line connection



Optional panel mounting version

MATERIALS

POS. N°	DESIGNATION	MATERIAL
1	Valve body	AISI 316L / 1.4404
2	Cover	AISI 316L / 1.4404
3	* Plug	AISI 316L / 1.4404
3A	* Valve head	** NBR; EPDM; PTFE; FPM
4	* Valve spring	AISI 302 / 1.4300
5	* Pushrod	AISI 316L / 1.4404
6	Seat	AISI 316L / 1.4404
6A	* O-ring	** NBR; EPDM; FPM
7	Piston sleeve	AISI 316L / 1.4404
8	* O-ring	** NBR; EPDM; FPM
9	* O-ring	** NBR; EPDM; FPM
10	Piston	AISI 316L / 1.4404
11	* O-ring	** NBR; EPDM; FPM
12	Plate	AISI 316L / 1.4404
13	* Adjustment spring	AISI 302 / 1.4300
14	Spring guide	AISI 316L / 1.4404
15	Adjustment screw	AISI 316L / 1.4404
16	Washer	Stainless steel A2
16A	Bolt	Stainless steel A2-70
17	* O-ring	NBR
18	Adjustment knob	Painted aluminium
19	Panel mounting ring	AISI 316L / 1.4404
20	Bearing	Corrosion resistant steel
21	Shaft ring	Stainless steel
22	Cover nut	Plastic
40	Cover	AISI 316L / 1.4404
41	Adjustment screw	Stainless steel A2-70
42	Top cap	AISI 316L / 1.4404
43	Locknut	Stainless steel A2
50	Leakage line ring	AISI 316L / 1.4404
51	O-ring	** NBR
52	O-ring	** FPM
53	Bolt	AISI 304 / 1.4301

* Available spare parts. ** Others on request.

Remarks: All valves have a serial number. In case of non-standard valves this number must be supplied if spare parts are ordered.

ORDERING CODES P20P													
Valve model	P20P	.	1	W	N	F	4	R	P	.	A	1	08
P20P – piston sensing pressure reducing valve	P20P												
Regulating range													
N°1 – 0,2 to 1,5 bar			1										
N°2 – 0,3 to 3 bar			2										
N°3 – 0,8 to 8 bar			3										
N°4 – 1,5 to 15 bar			4										
N°5 – 3 to 30 bar			5										
N°6 – 5 to 50 bar			6										
N°7 – 20 to 200 bar			7										
Application													
Water				W									
Gases				G									
Oxygen (degreased)				O									
Seal material													
NBR					N								
EPDM					E								
PTFE a)					T								
FPM / Viton					V								
Maximum inlet pressure													
220 bar						F							
Gauge port options													
Without gauge ports										(1)			
Gauge port on the left side (relative to the flow direction)										4			
Gauge port on the right side (relative to the flow direction)										3			
Gauge ports on both sides										2			
Relieving and leakage line connection													
Non-relieving												(1)	
Relieving (only for non dangerous gases)										R			
Relieving with leakage line connection										L			
Panel mounting													
Without panel mounting ring												(1)	
With panel mounting ring										P			
Pipe connection													
Female threaded ISO 7 Rp (non-standard)													A
Female threaded ISO 228													B
Female threaded NPT ASME B1.20.1													C
Flow rate coefficient													
Kvs 0,043													1
Kvs 0,22													2
Kvs 0,62													3
Size													
1/4"													08
Special valves / Extras													
Full description or additional codes have to be added in case of non-standard combination.													E

(1) Omitted if a standard valve is requested.

a) Valve head only, other seals in FPM/Viton or others on request.